

Getting Started with ITVDesk

Welcome to **ITVDesk** — the easiest way to stream your Windows desktop or webcam directly to your VMS, NVR, or RTSP-compatible system.

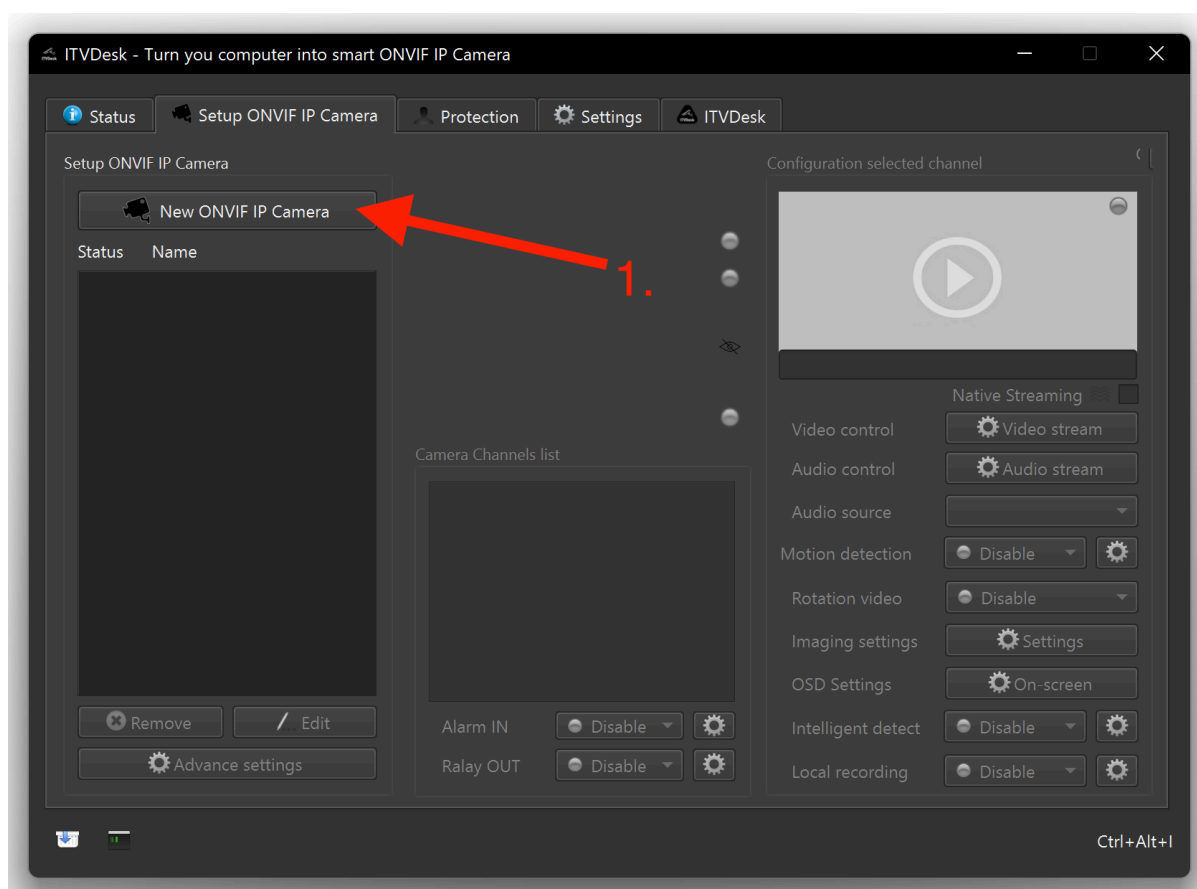
1. Install ITVDesk

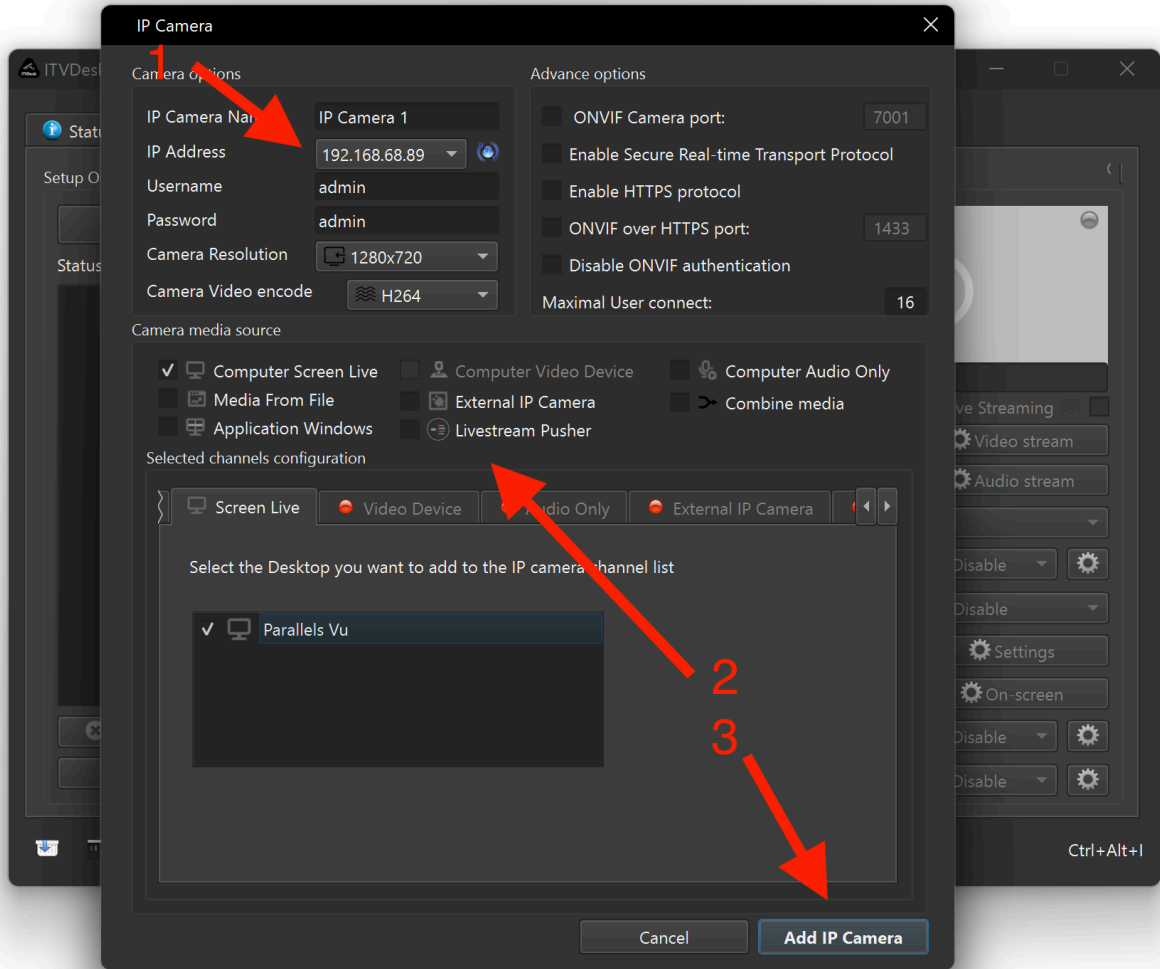
Download and install the latest version of ITVDesk from our official website:

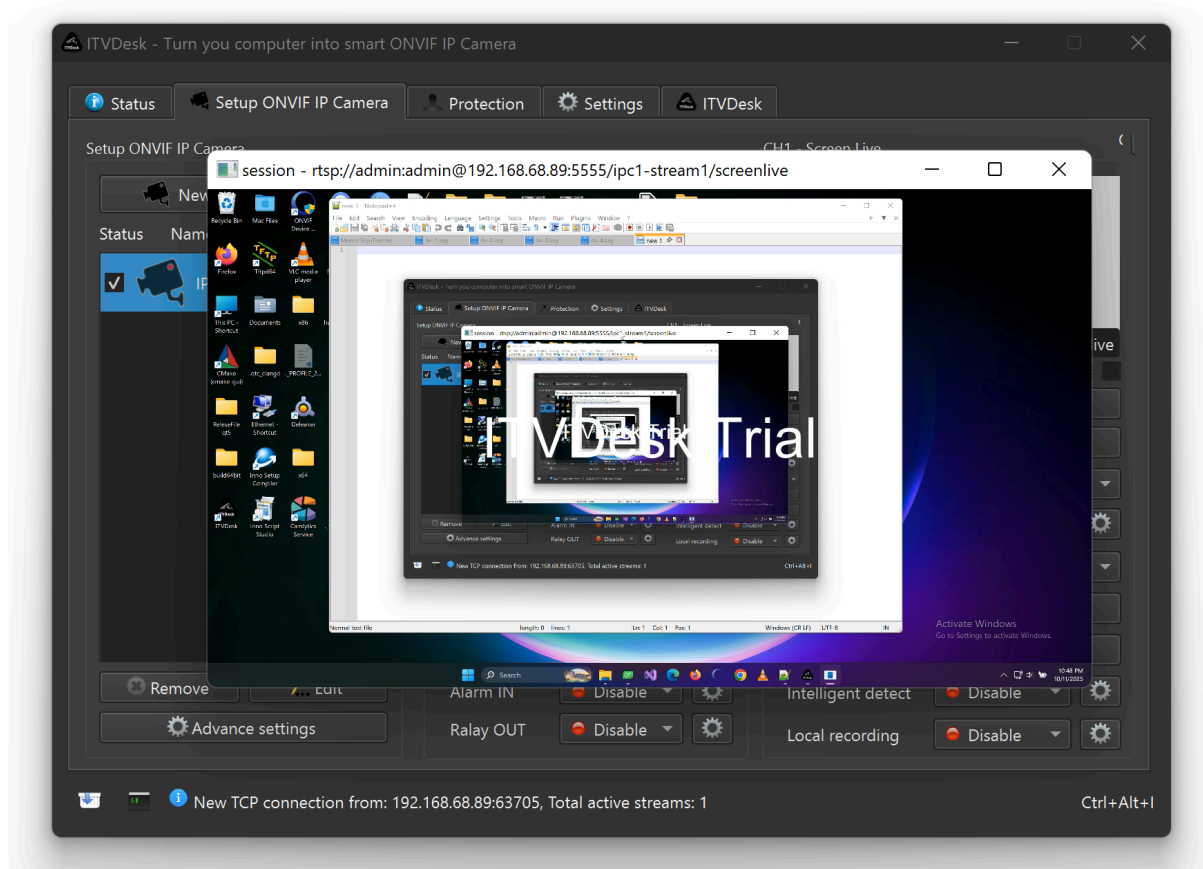
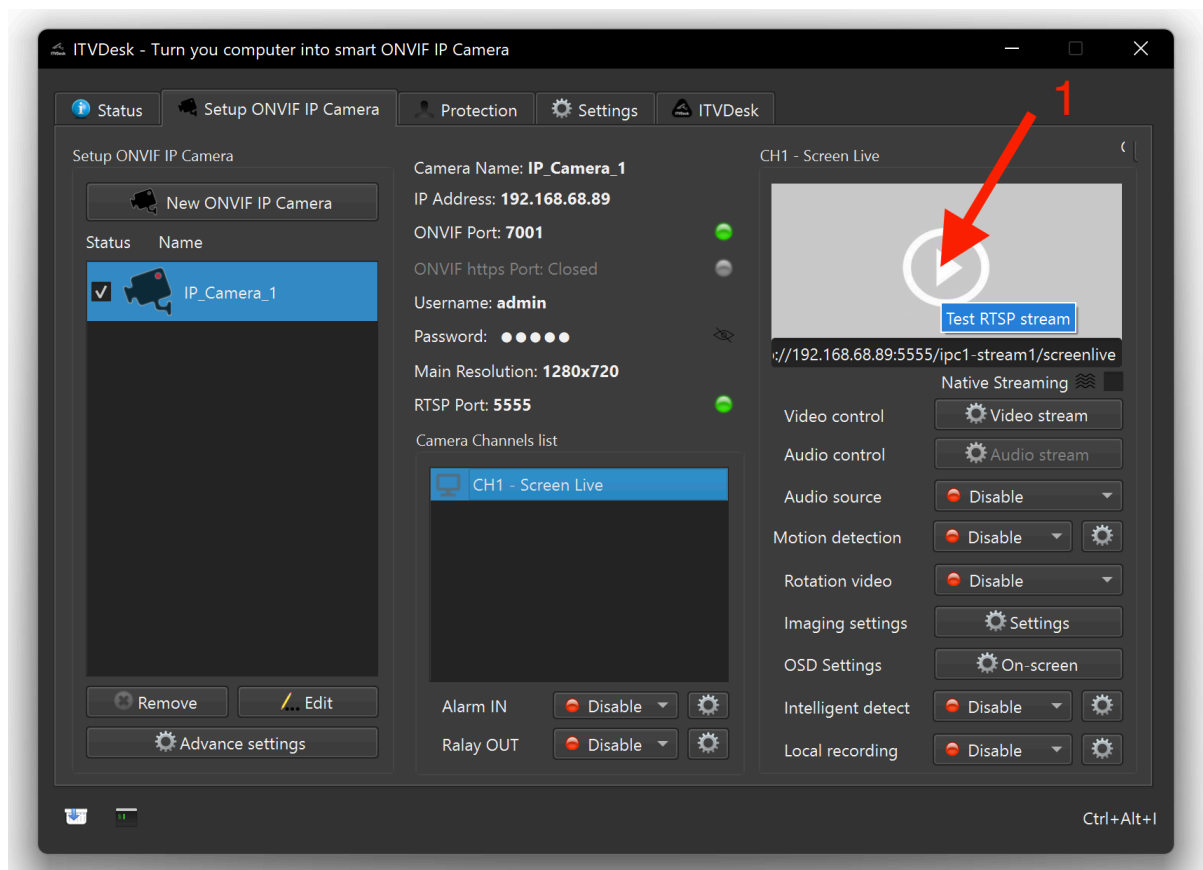
2. Activate Trial License

When you start the app for the first time, click **“Get Trial Online”** to activate your 15-day free trial. You’ll receive a confirmation email with your license details and a discount coupon.

3. Start Streaming







Once your trial is active, you can start streaming your screen or camera using:

- **RTSP** – e.g. `rtsp://your_pc_ip:5555/ipc1-stream1/screenlive`
- **RTSPS** – Secure RTSP (over HTTPS)
- **ONVIF** – Compatible with all major VMS/NVR systems and streams player like VLC etc.



4. Connect to Your VMS or NVR

Open your VMS software (Milestone, Nx Witness, Luxriot, etc.) or NVR and add a new camera using the RTSP or ONVIF URL shown in ITVDesk.

[You can use video help >>](#)



Need More Help?

Visit our [Support Page](#) or contact us at support@itvdesk.eu

— The ITVDesk Team