

INSTALLATION GUIDE

ITVDESK - ONVIF IP CAMERA



ITVDESK INTEGRATION
IPCONFIGURE ORCHID VMS

IPCONFIGURE

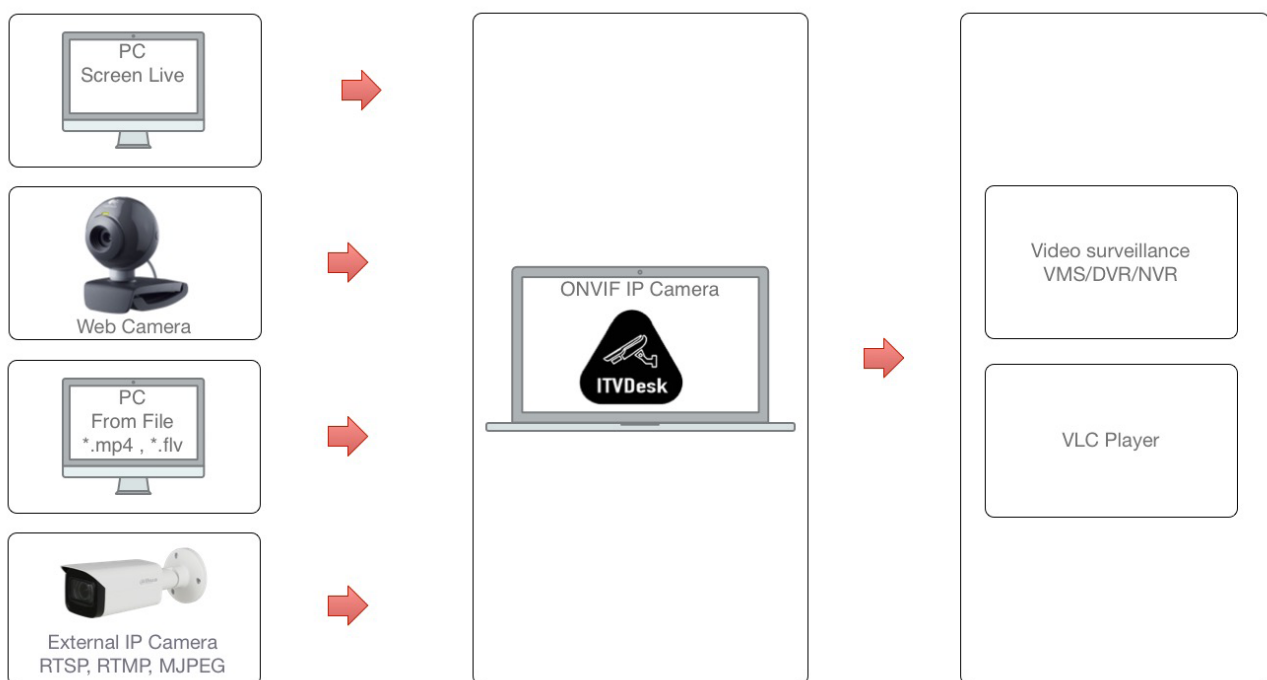
TABLE OF CONTENT

1. Overview	3
2. Copyright, Trademarks and Disclaimers	3
3. License	4
4. System requirements	5
5. Installation	5
a. Installation on Windows platform	6
b. Installation on Linux platform	13
6. After Installation	14
7. Support centre	20
8. IPConfigure Orchid	21

1. OVERVIEW



ITVDesk is a software solution for PC surveillance. The software allows you to shoot in real-time in high definition, picture and sound on your computer's display on a video recorder (DVR) or network video recorder (NVR). The software allows to stream a PC desktop, webcam, From File or External IP Camera via the RTSP and ONVIF protocol. Each terminal with the Windows, Linux or Mac Osx operating system can be equipped with a solved ITVDesk application. The ITVDesk is ideal for controlling POS cash registers, casinos, education, healthcare, banking, control terminals, or even controlling workforce staff.



2. COPYRIGHT, TRADEMARKS AND DISCLAIMERS

Using the software user agrees with ITVDesk software EULA.

3. LICENSE

ITVDesk software uses PC-based, hardware-tied licenses.

A license can be activated via the Internet, or manual/offline activation must be performed.

Once the license is activated, it is tied to the PC hardware. User may use the same license after reinstalling ITVDesk or Windows; however, User must purchase a new license to use the software on a new PC or request a license transfer to another PC.

Three kinds of licenses are available:

One-Time Purchase, with unlimited period and no watermark. Software updates are free during the all period of a License.

One-Year Subscription, with One-Year period and no watermark. Software updates are free during the all period of a License.

Trial, with watermark on the video feed and a 15-day demo period starting from the activation date. The user may request as many trial licenses as necessary for use on different PCs on the user's network.

4. SYSTEM REQUIREMENTS

WINDOWS:

- x64 or x86 OS starting at Windows 7 SP1 or later.
- Microsoft Visual C ++ 2019 Redistributable Package (x86).
- Medium-performance PC.
- Not Internet connection required.

LINUX:

- Linux x64 or x86 OS
- Medium-performance PC.
- Not Internet connection required.

5. INSTALLATION

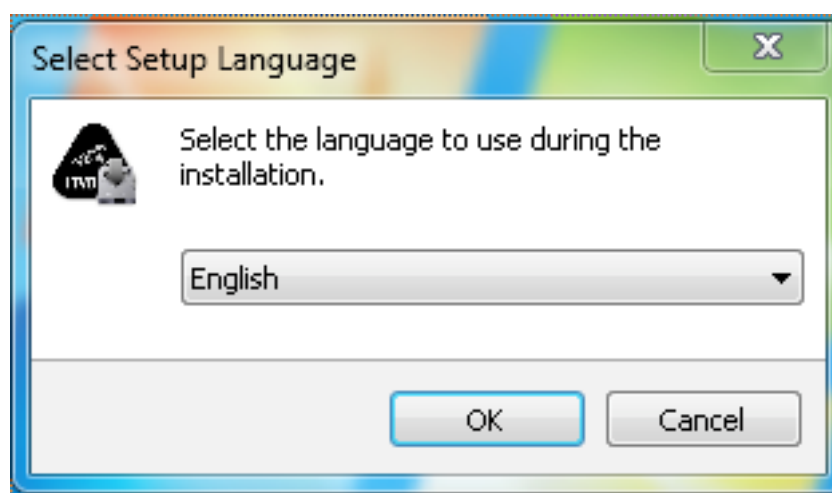
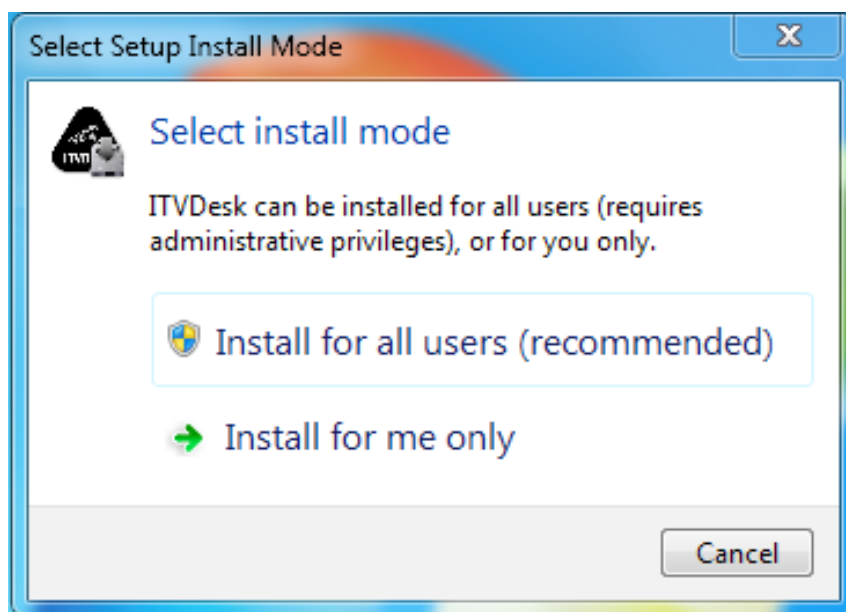
WINDOWS:

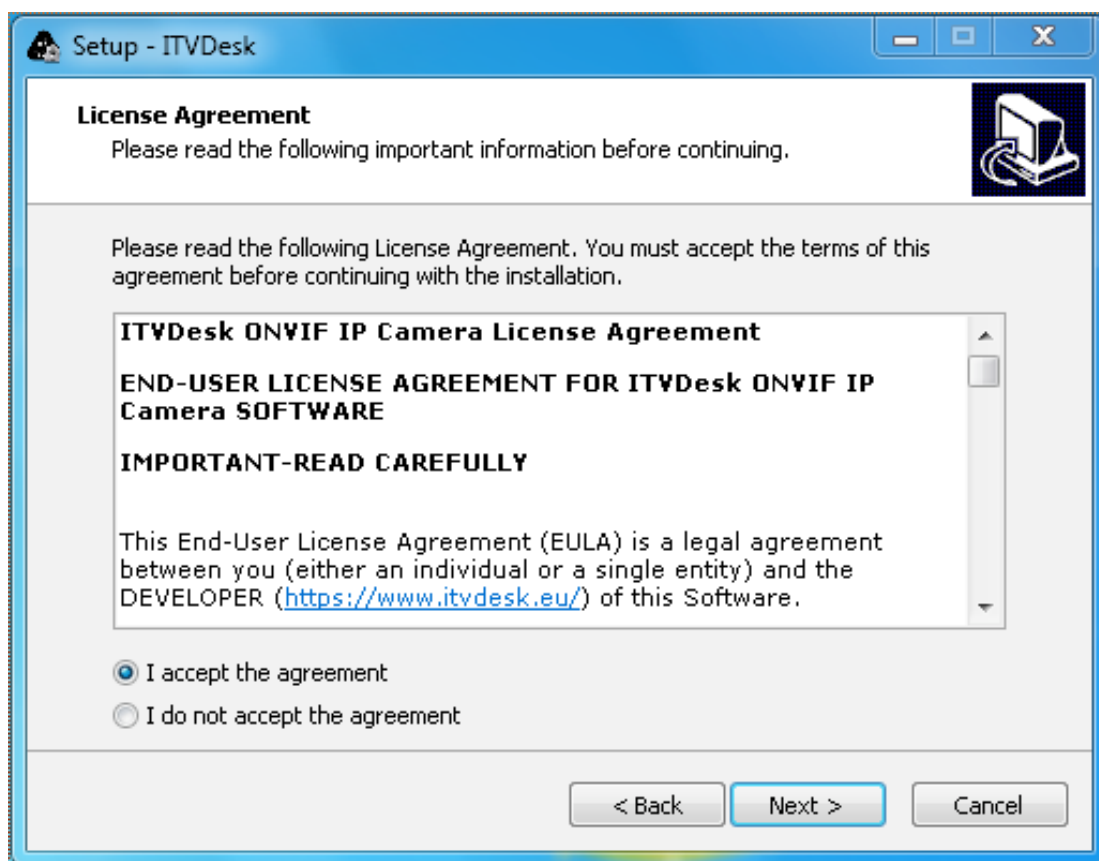
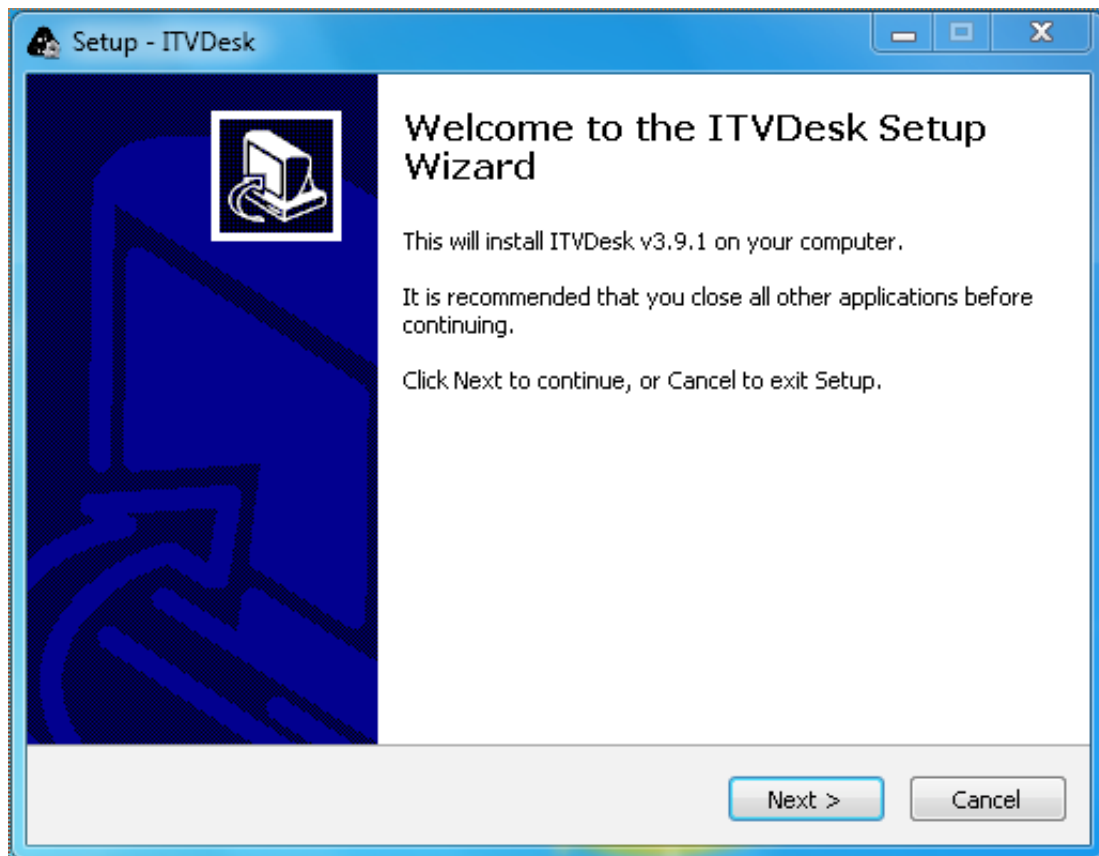
1. Download ITVDesk setup package [Download](#)
2. Install it
3. Click Trial button or send us request license
 - a) One-Year Subscription
 - b) One-Time Purchase
4. Activate the license via load licences file
5. Use it

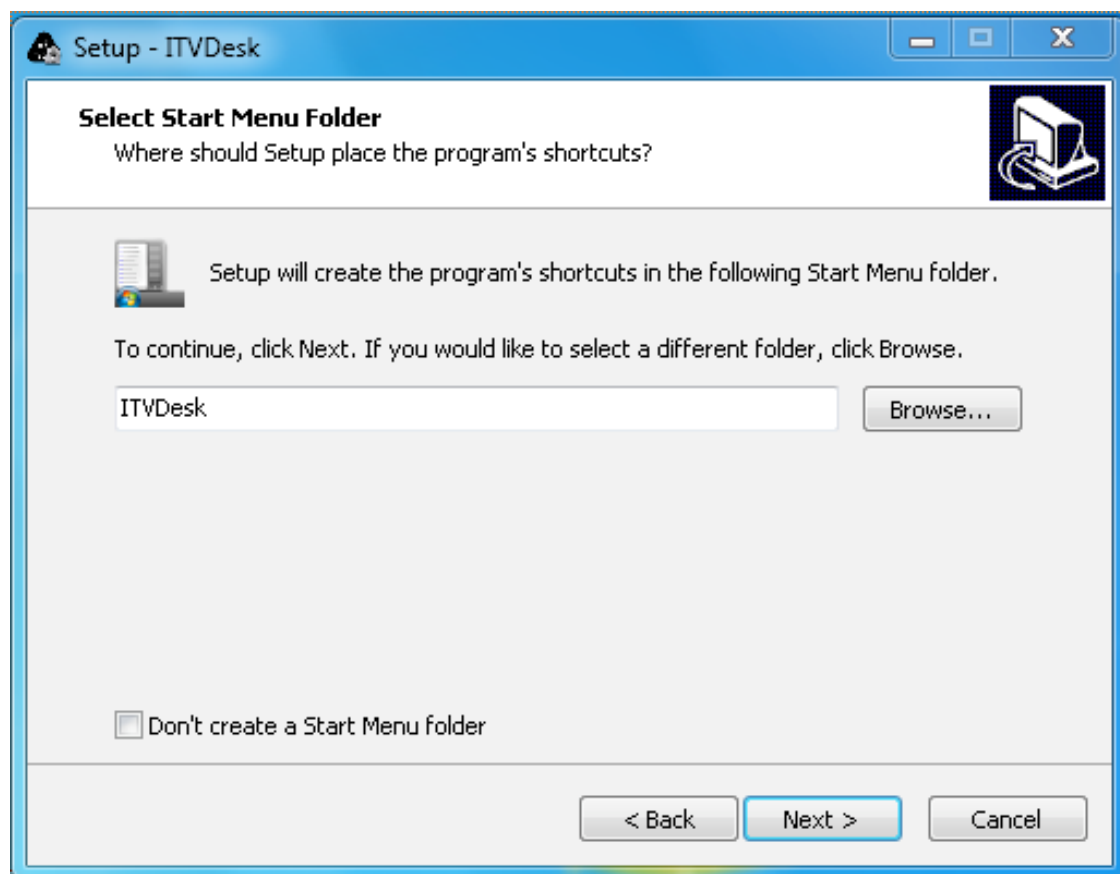
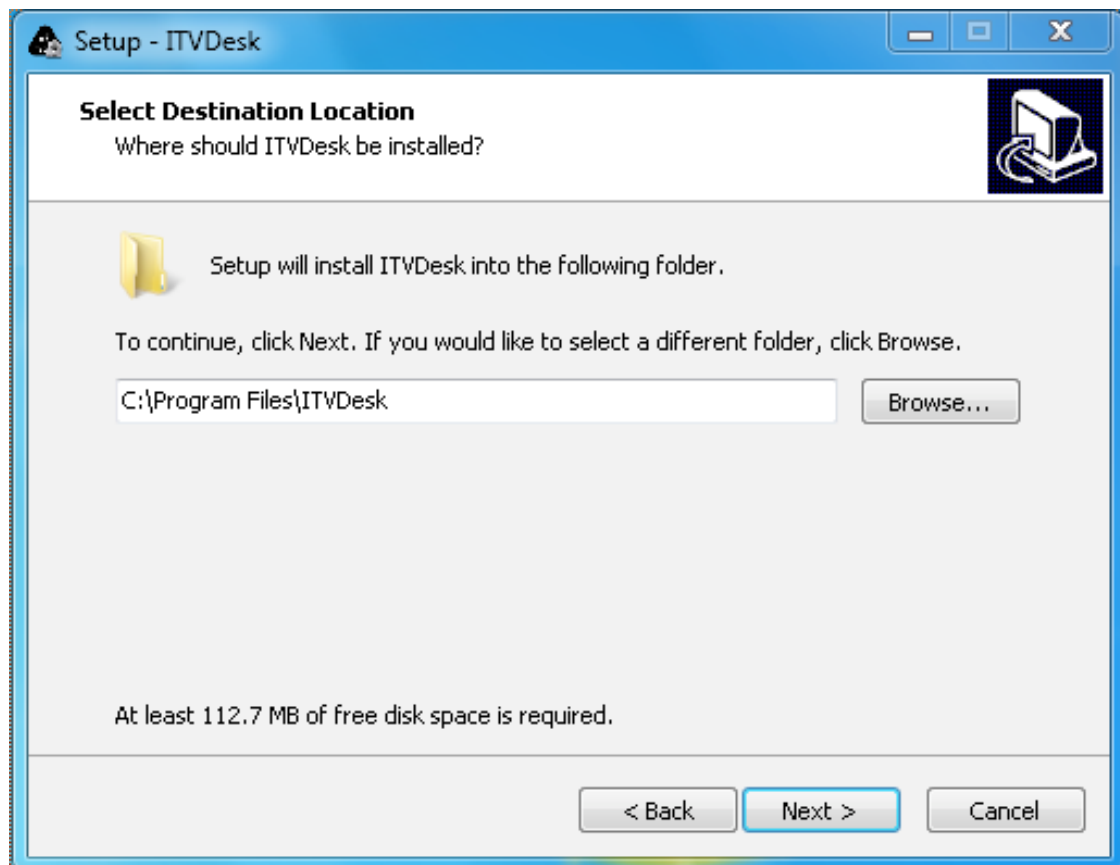
LINUX:

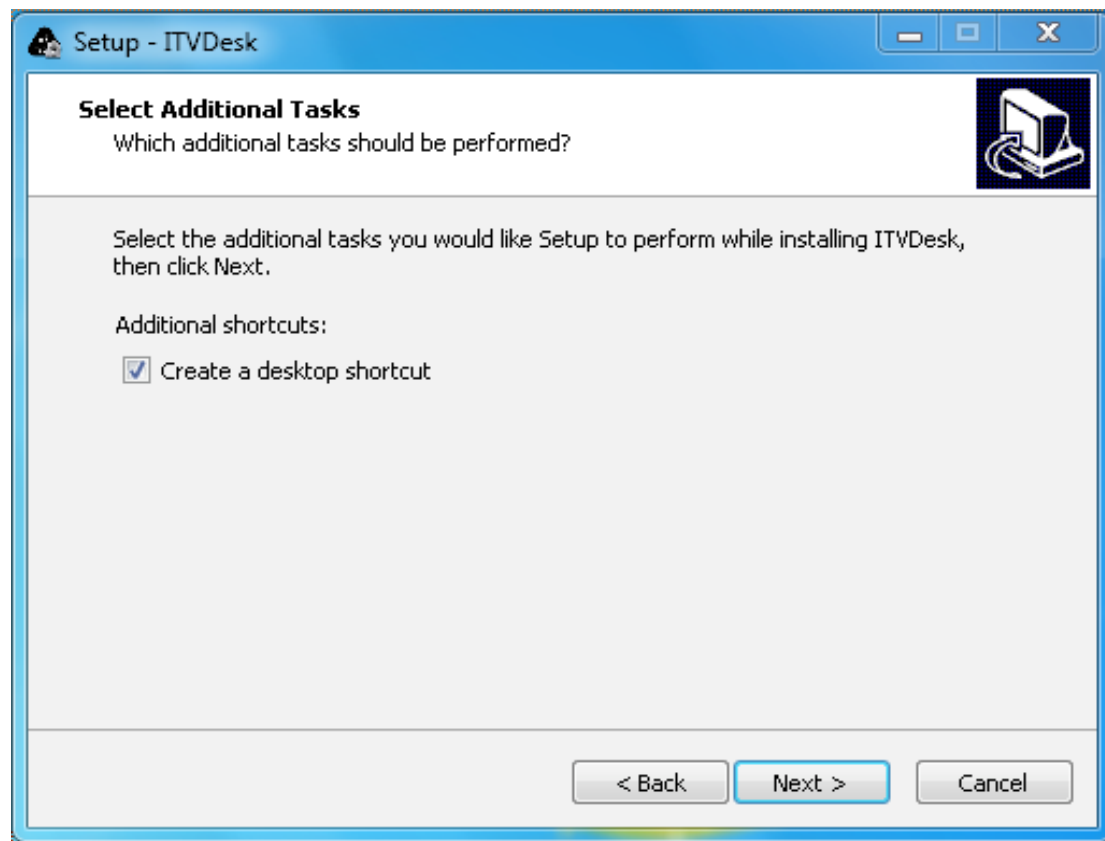
1. Download ITVDesk.ApplImage package [Download](#)
2. Make it executable (`chmod a+x ITVDesk*.ApplImage`) and Run
3. Click Trial button or send us request license
 - a) One-Year Subscription
 - b) One-Time Purchase
4. Activate the license via load licences file
5. Use it

INSTALLATION ON WINDOWS PLATFORM

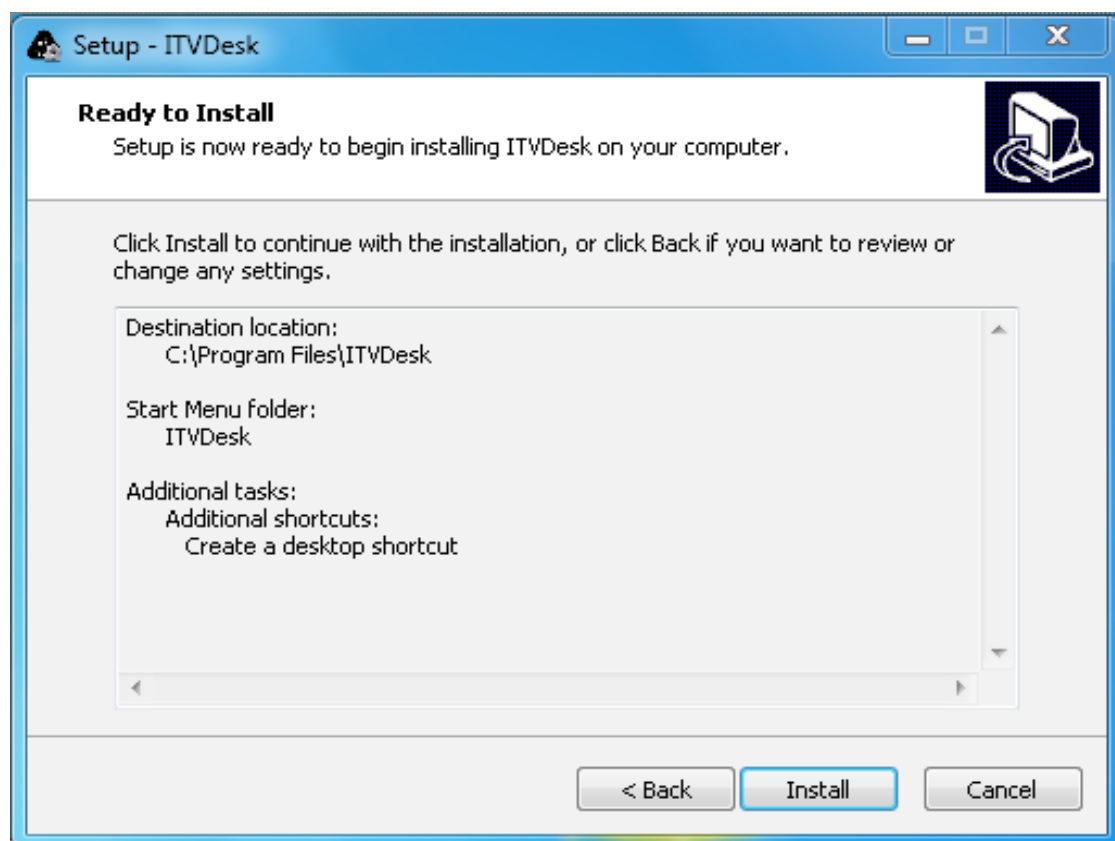




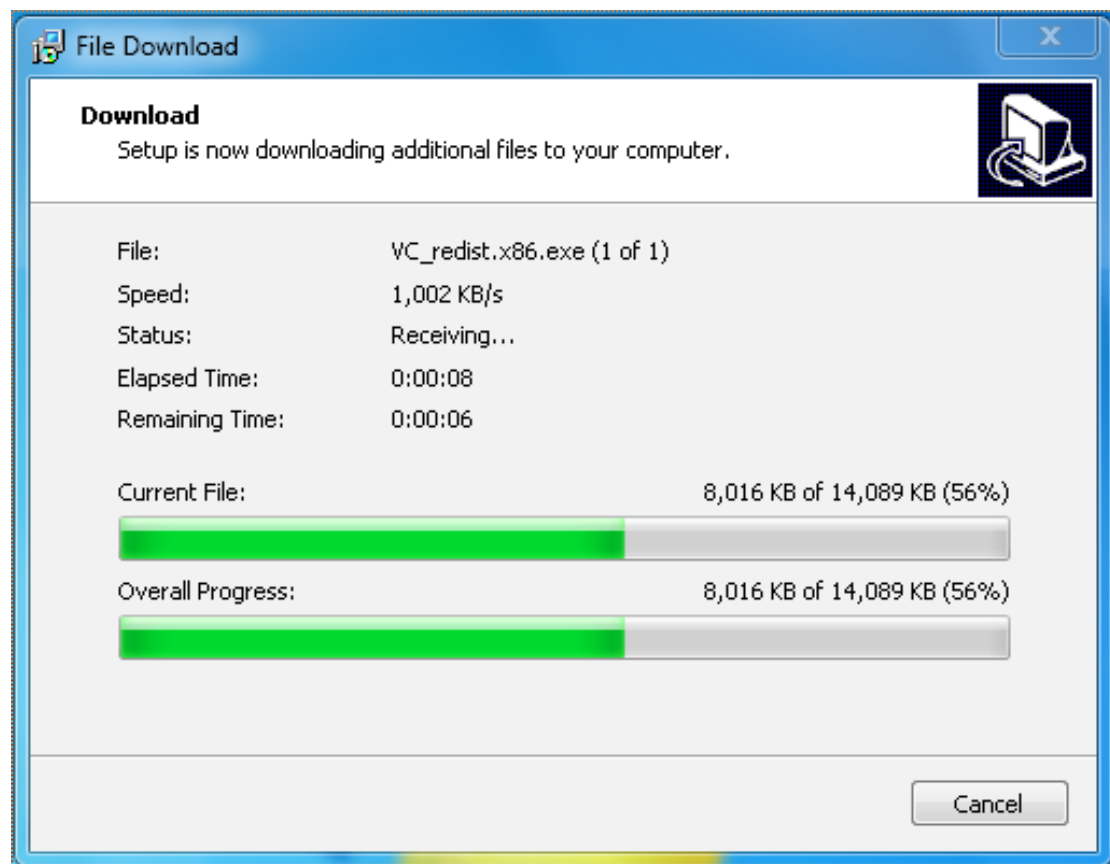
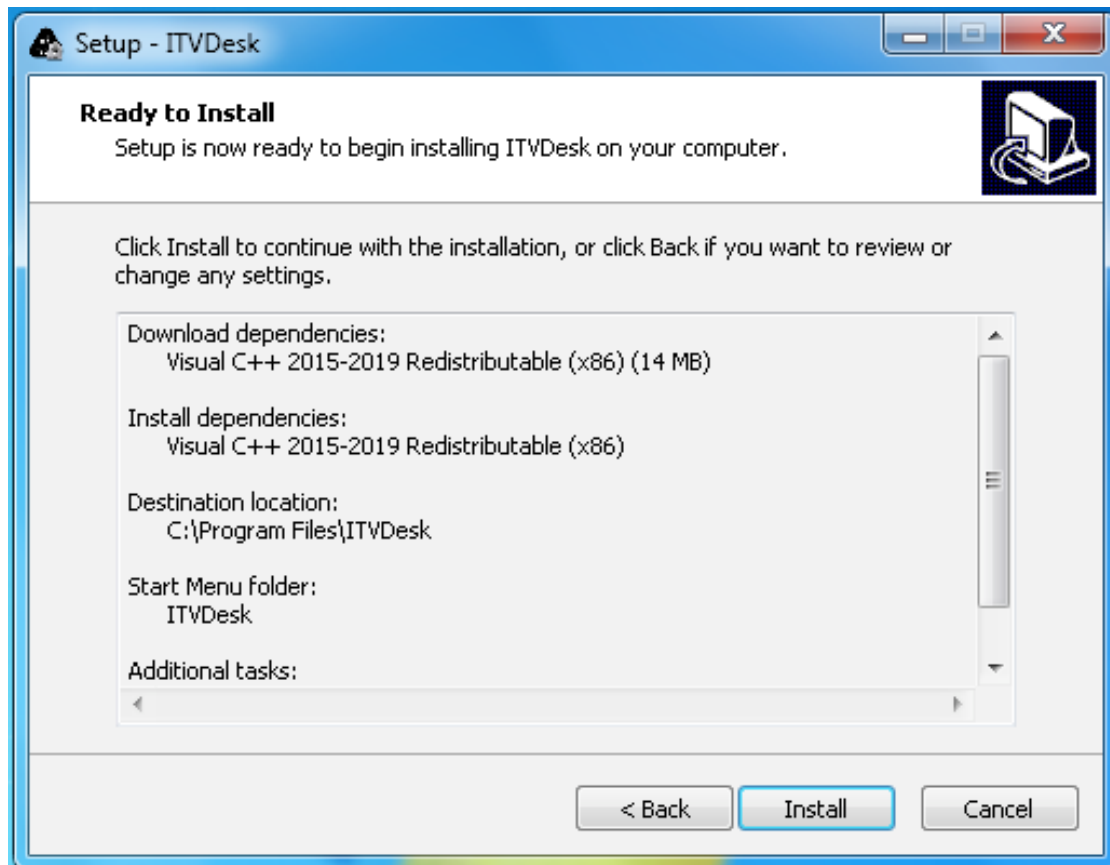


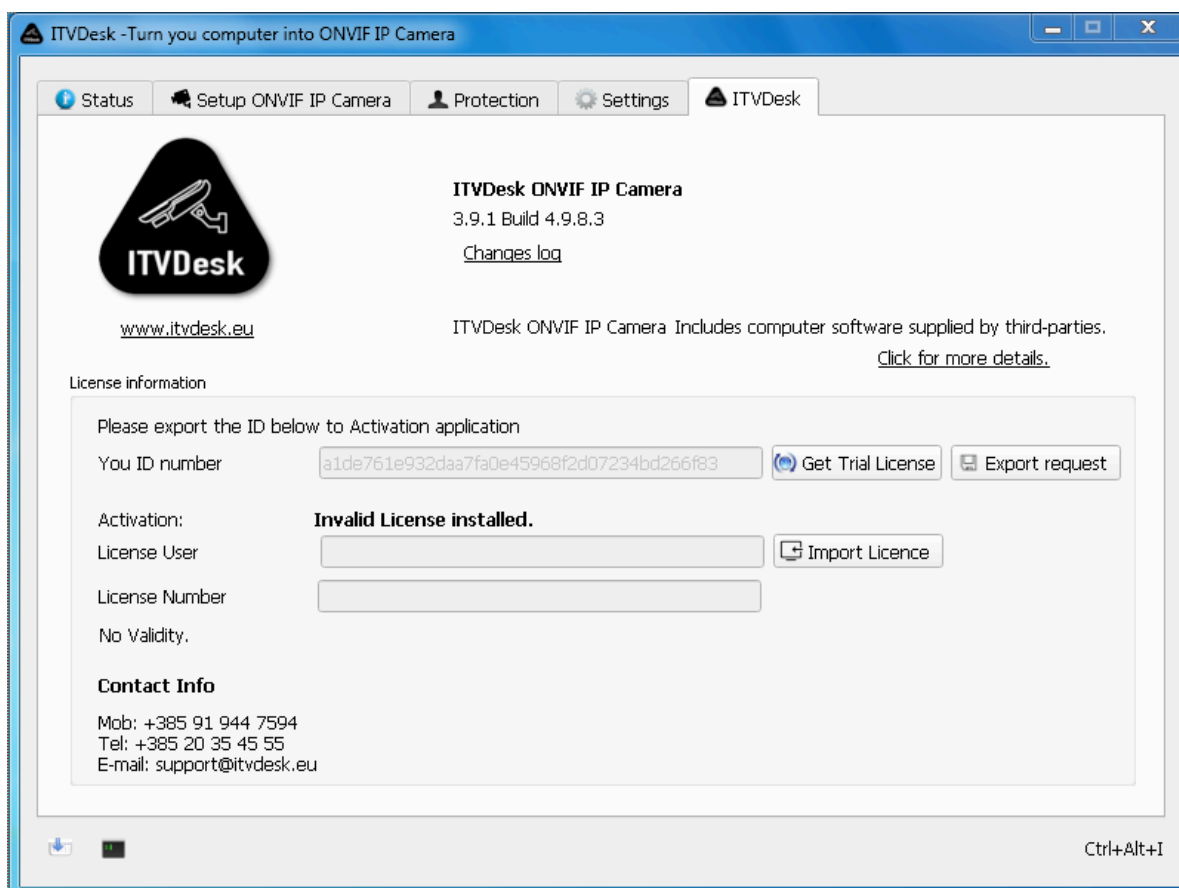
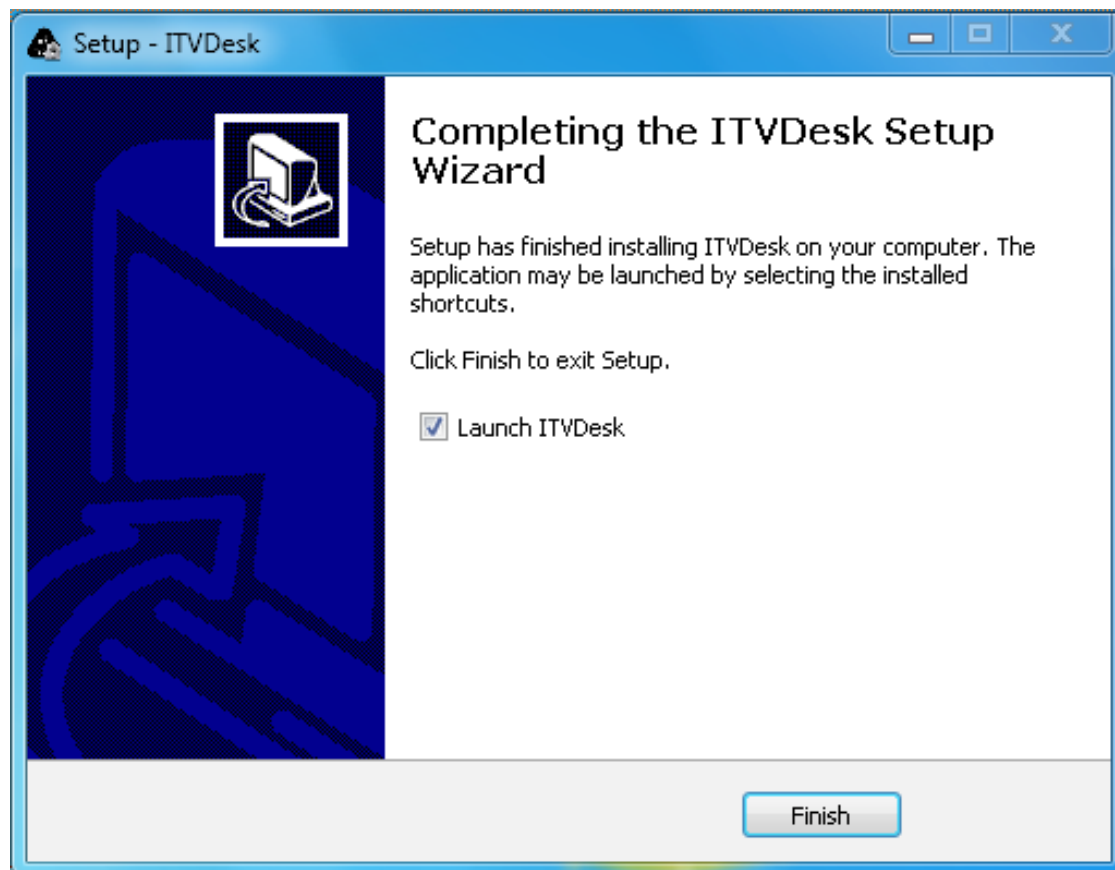


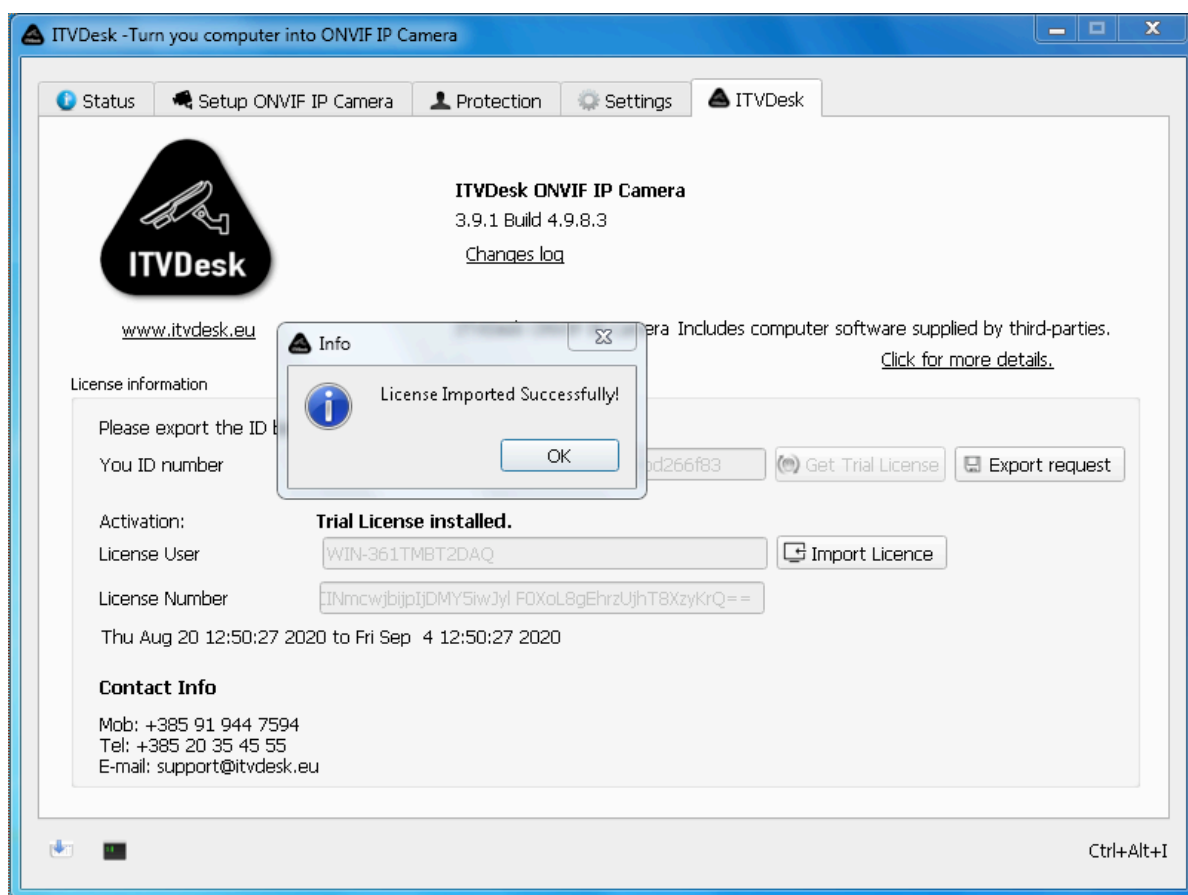
a) On the computer is installed Microsoft Visual C ++ 2019 Redistributable Package:



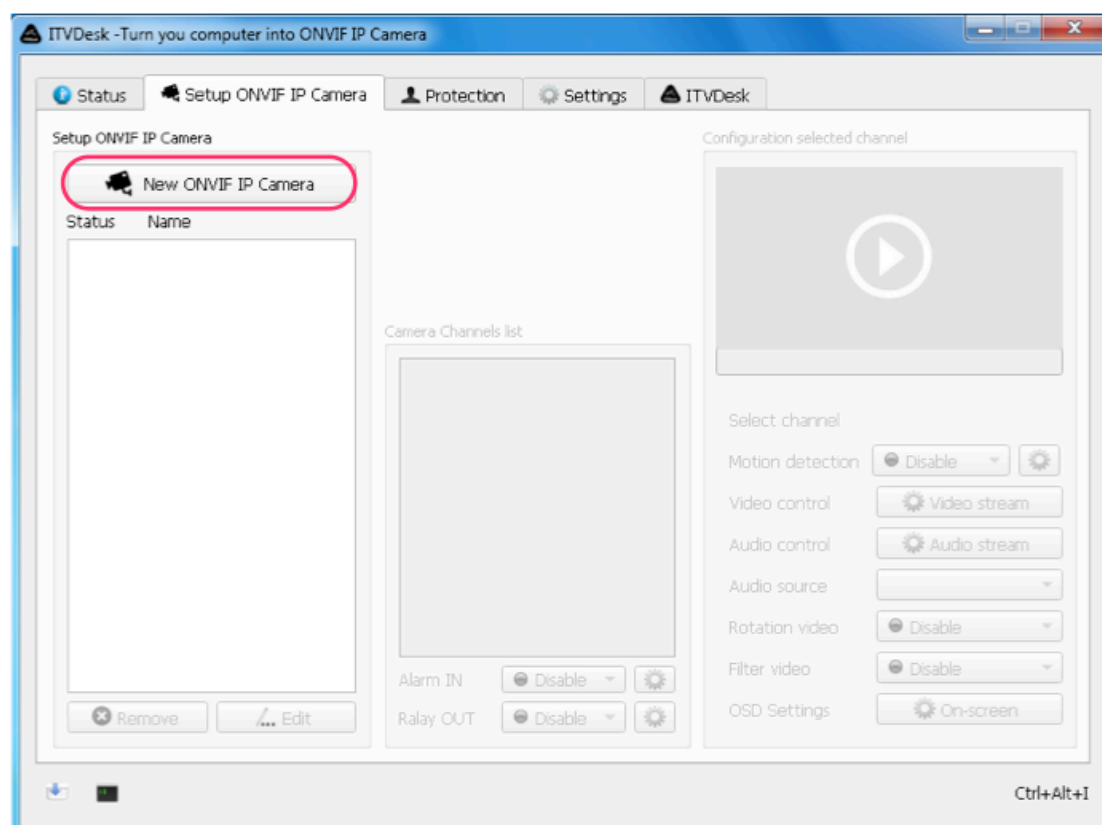
b) If it is not installed on the computer Microsoft Visual C ++ 2019 Redistributable Package (x86) then it will be automatic download from Internet. Without Internet connection need to install manual Microsoft Visual 2019 Redistributable Package (x86).

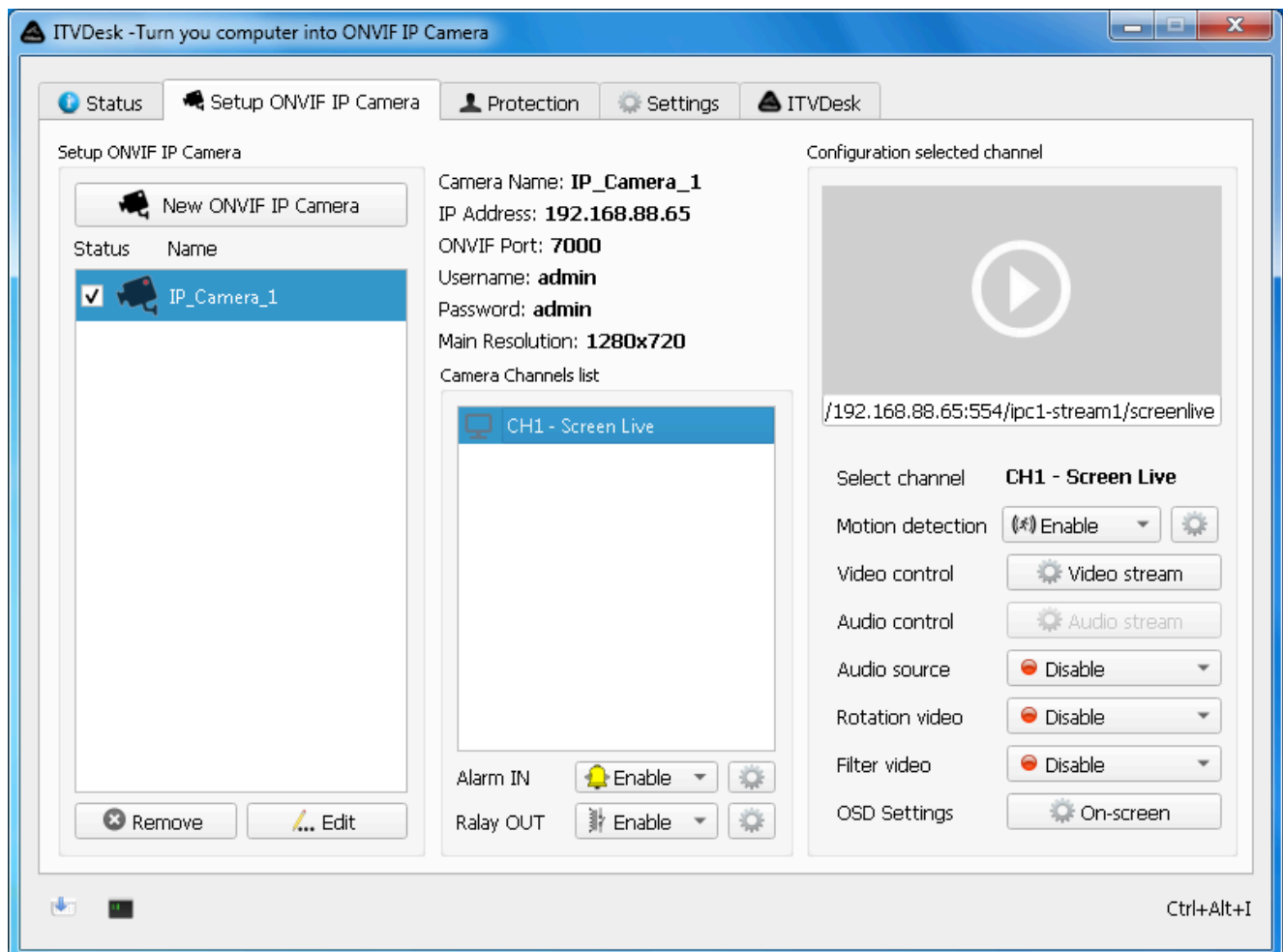
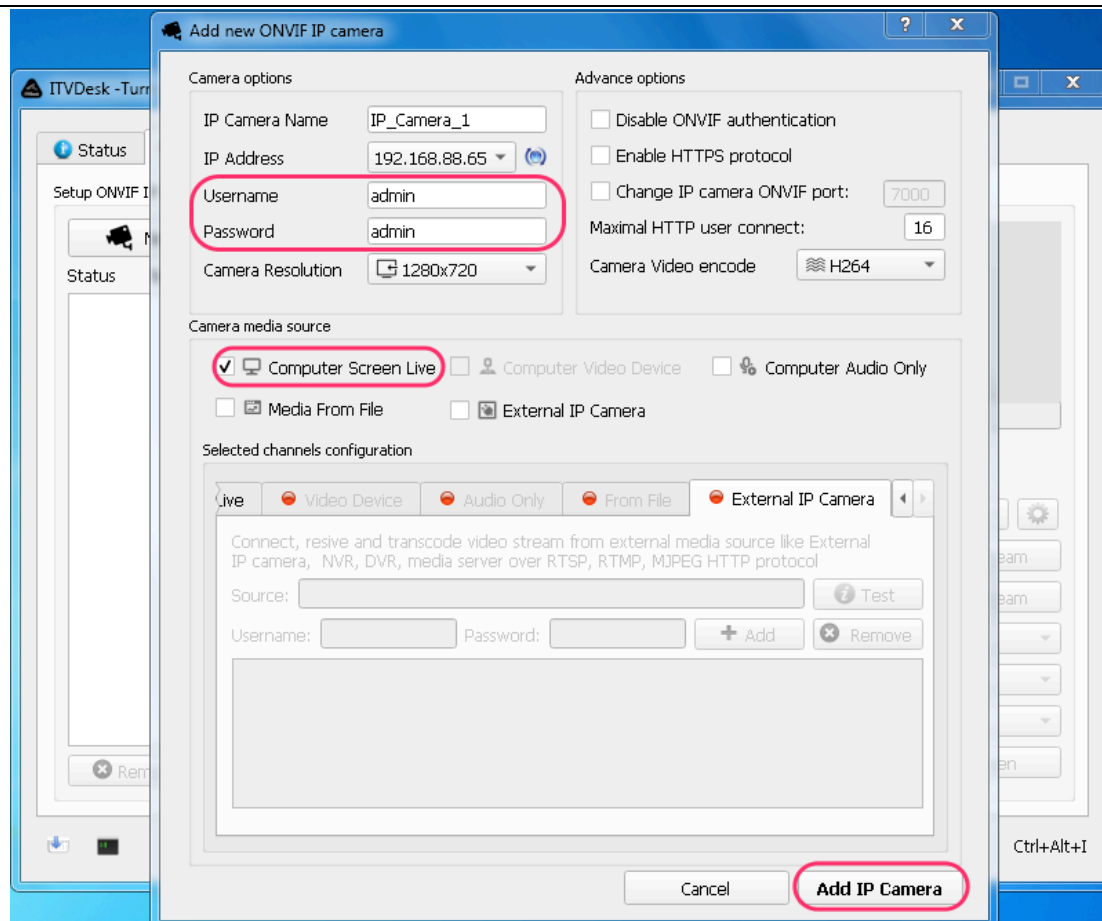




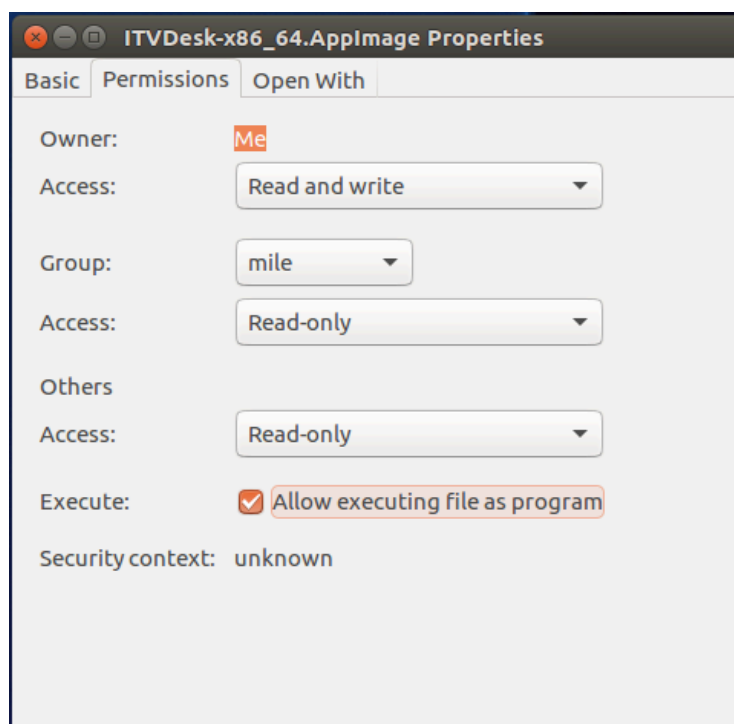
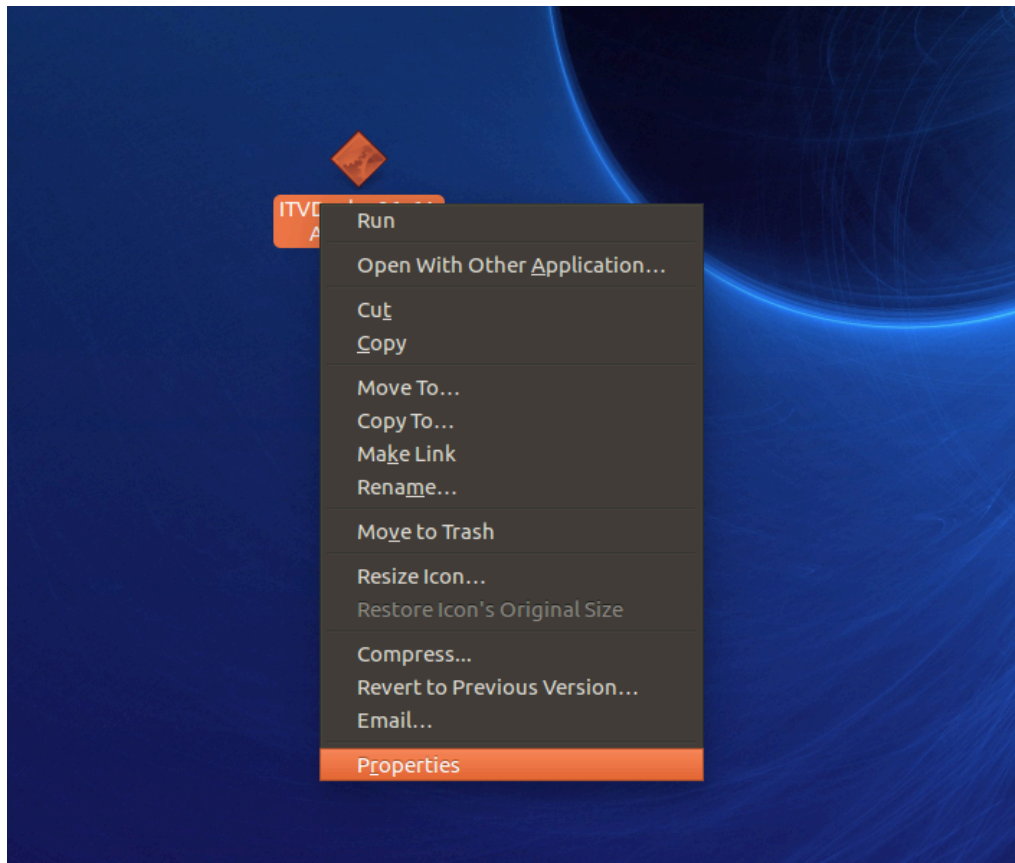


Setup New virtual ONVIF IP Camera:

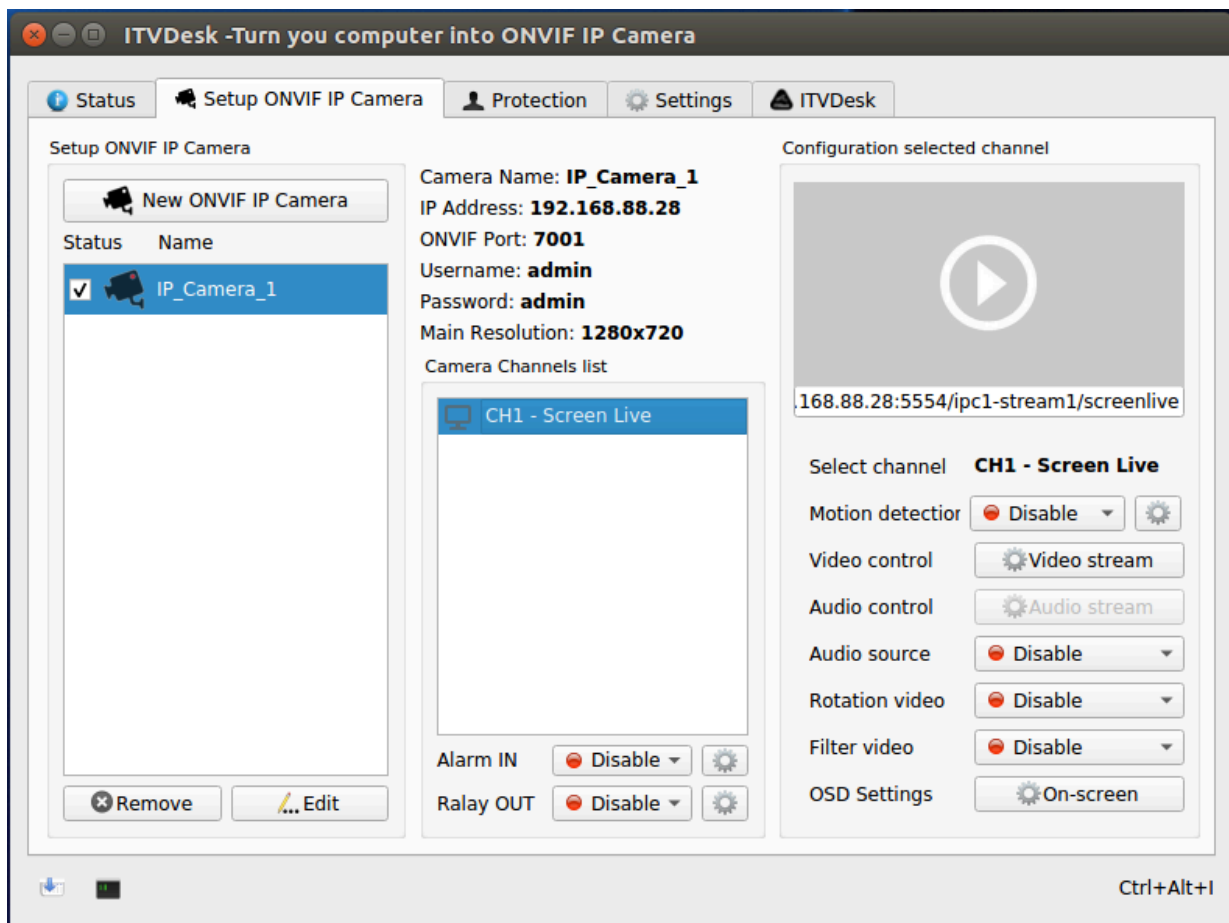
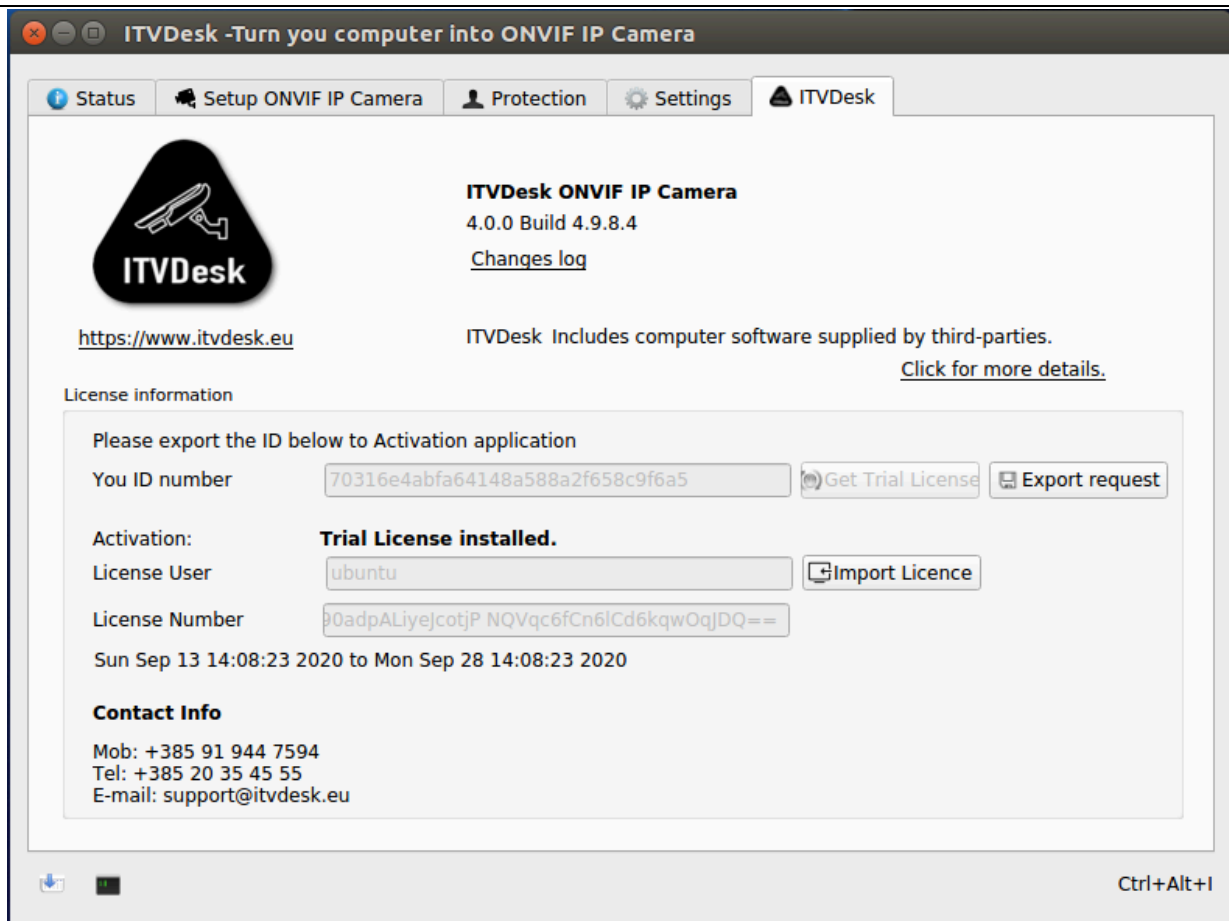




INSTALLATION ON LINUX PLATFORM



Run it ITVDesk !



6. AFTER INSTALLATION

ITVDesk allows to transmit PC desktop video feed, webcam, From File, Only Audio and External IP camera as an ONVIF camera profile: T, S with audio support.

ITVDesk starts with operating system and accessible on a PORT: 7000. The software allows to select an IP address if the PC has multiple IP addresses or set automatic change.

ITVDesk video parameters could be managed directly from any ONVIF compatible NVR/XProtect like if that is a physical ONVIF IP camera.

VMS XProtect have options for Multiple Channels. Multiple Channels is give users to create full virtual ONVIF IP Camera with multiple video channels – one channel for each video input (screen or webcam). (Example – if there are 2 monitors connected and 3 webcam, the ITVDesk will appear as 1 ONVIF device with 5 video outputs/channels.)

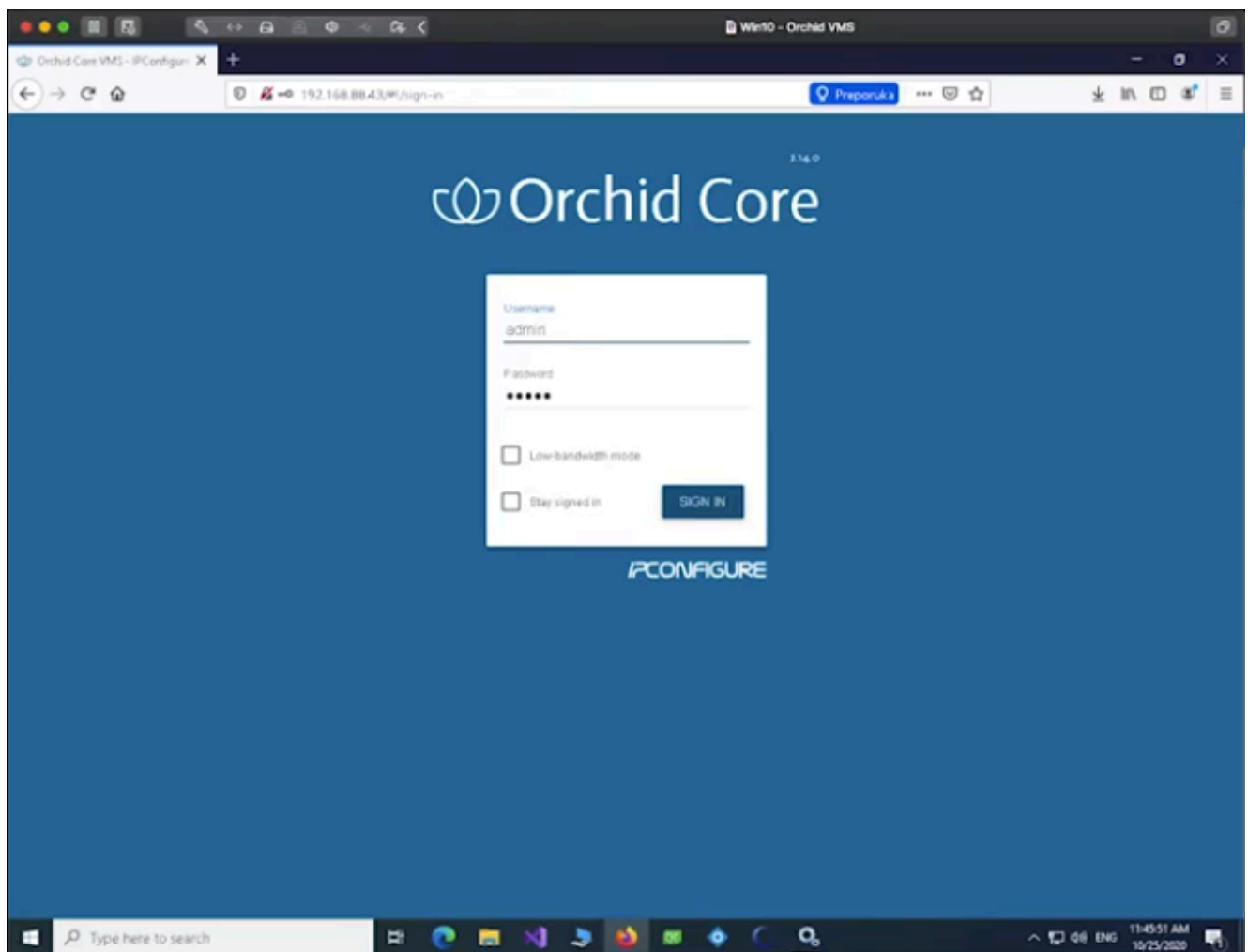
Multiple Cameras give users to create a new full virtual ONVIF IP Camera with one video input. This could be useful if NVR/VMS does not support ONVIF multichannel devices. In this case, ITVDesk can produce a new dedicated IP camera for each video input. All cameras will share the same IP address, but will have a different port. (Example – if there are 2 monitors connected and 1 webcam, the ITVDesk will appear as 3 ONVIF devices running on ports 7000, 7001, and 7002. Each device will have 1 video channel.)

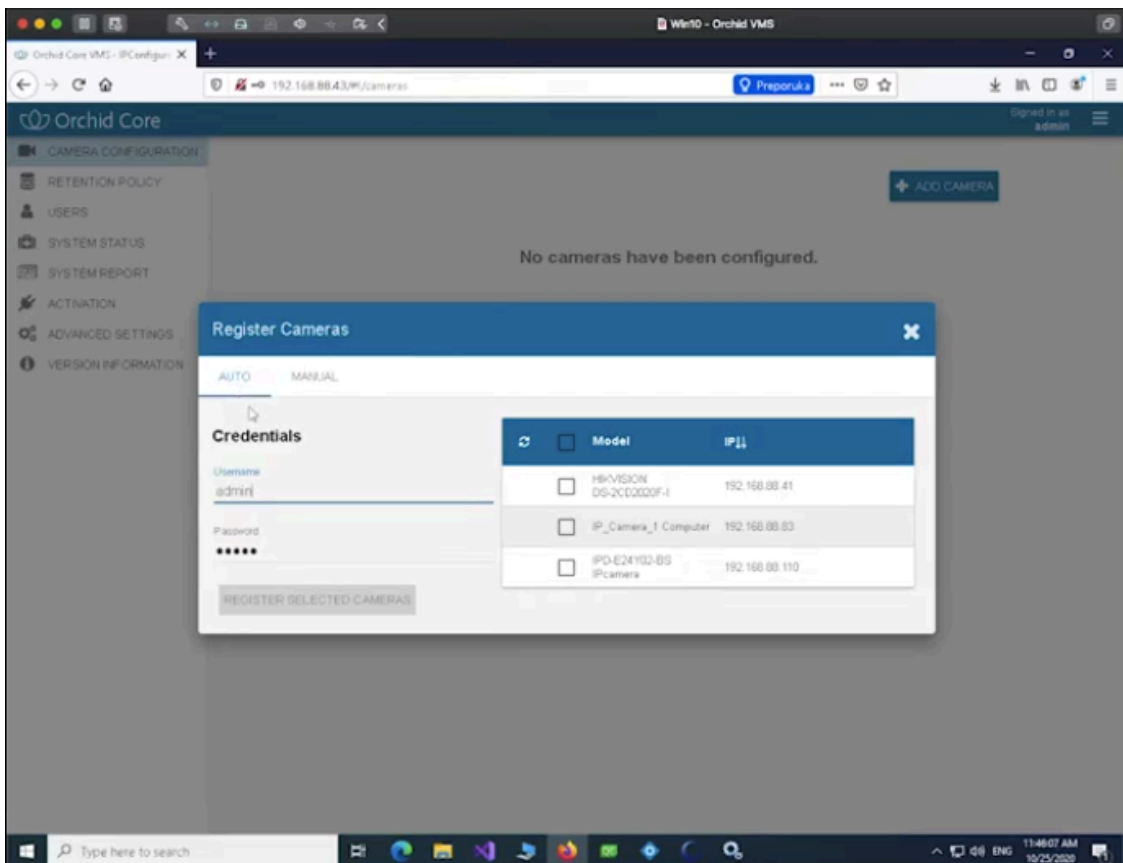
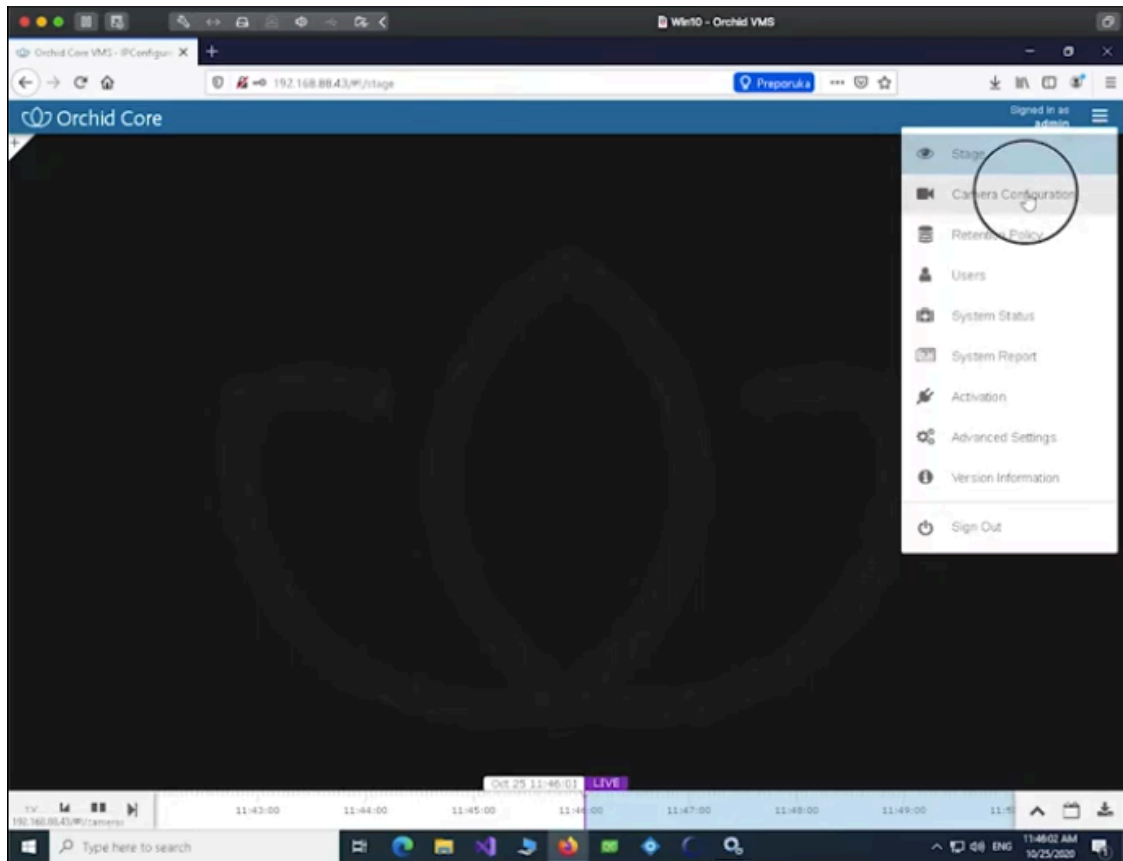
* - ITVDesk have full supports of the ONVIF Profile T, S functionality. * - ONVIF interface compatibility is tested by ONVIF official test tool. * - All stream have Transcoding, Transmuxing, Transrating and can be setting front and over ONVIF protocol

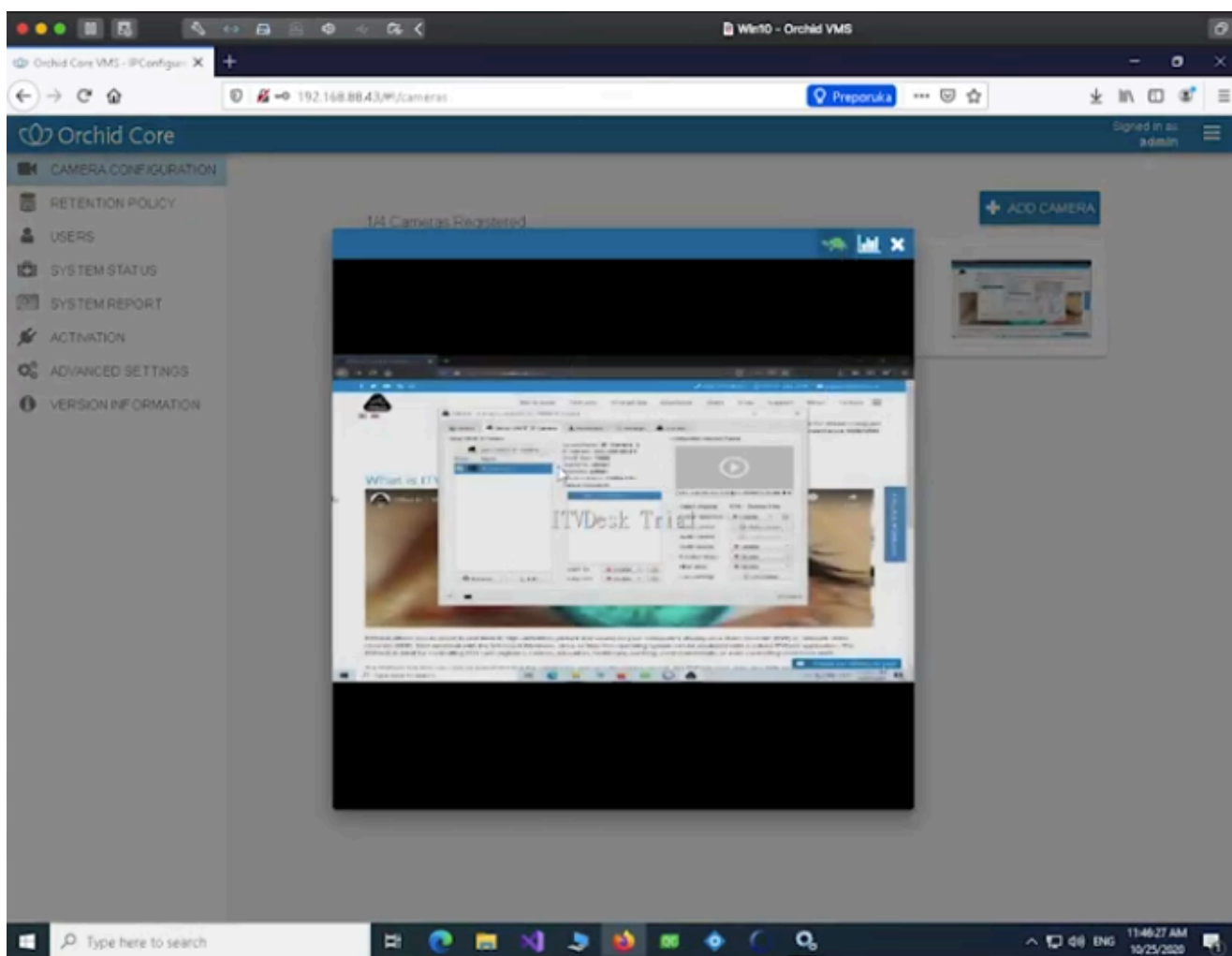
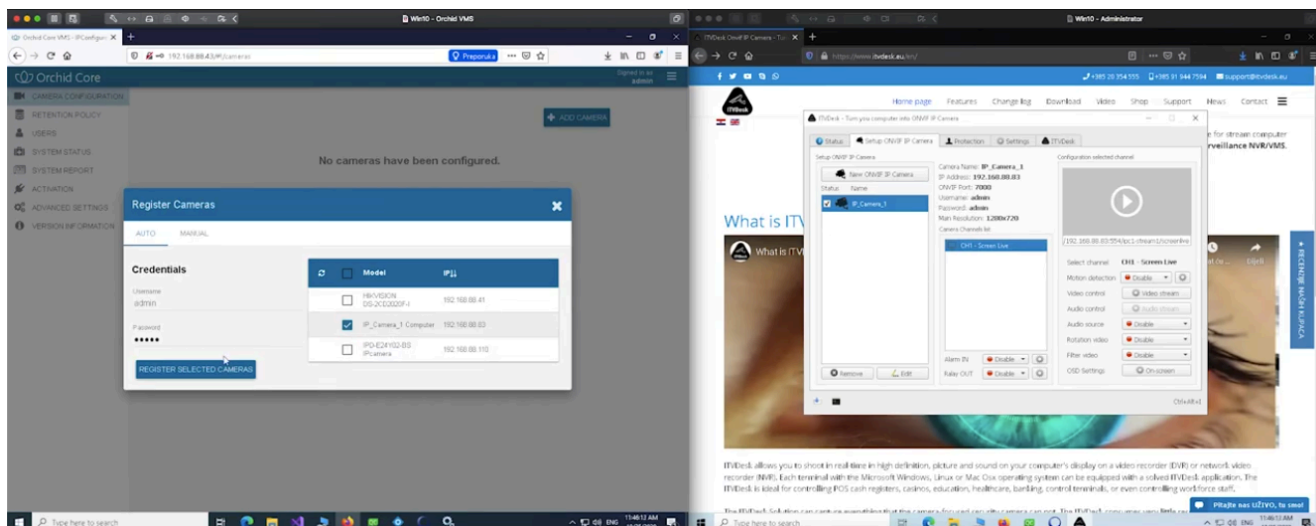
IPCONFIGURE

Orchid Core VMS can connect to ITVDesk via either ONVIF or RTSP protocol fast and easy

<https://www.helpdesk.itvdesk.eu/kb/faq.php?id=56>







7. SUPPORT CENTER

Use ITVDesk helpdesk center portal to find the answers for the most questions or submit a support ticket. For more details please visit: <https://www.itvdesk.eu/supportcenter.php>

ITVDESK



<https://www.ITVDesk.eu>

Email: support@itvdesk.eu

Phone: +385 20 35 45 55

Mobile: +385 91 944 75 94 (WhatsApp, Viber, Telegram)

IPCONFIGURE

IPConfigure Orchid is used by customers ranging from small business owners to some of the world's largest global retailers. Recognized for its reliability and ease of use, Orchid provides local and remote access to live and recorded video through an intuitive web browser interface, with the same user experience on both workstations and mobile devices.

The Orchid web interface is hosted by one or more Orchid servers running on traditional Windows or Linux systems, NAS storage devices, or on supported embedded hardware. Orchid supports over 4,500 IP cameras through the ONVIF Profile S specification. This cross-platform flexibility adapts to your existing infrastructure and reduces IT, hardware, and licensing costs.

Orchid boasts a simple, sophisticated interface that offers a rich, engaging user experience. In addition to camera auto-discovery and configuration. Orchid also features an advanced capture engine that provides redundant edge- and rules-based alarm recording.

Orchid is priced per camera and is distributed through Anixter, CSC, Graybar, Ingram Micro, and ScanSource.